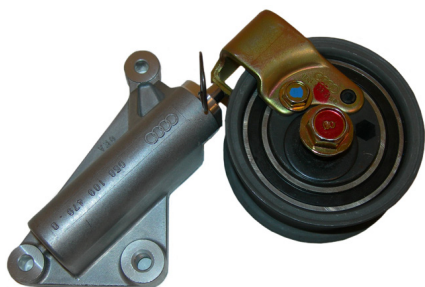




SYNCHRONOUS BELT DRIVE SYSTEM TECHNICAL SERVICE BULLETIN



AUDI AND VOLKSWAGEN 1.8L SERVICE INFORMATION

Due to durability issues with the original OE synchronous drive system, the vehicle manufacturer has reengineered the drive to achieve a more reliable setup that provides worry free performance.

BULLETIN PA005-12

PART NUMBER:

Timing Kit –
2523170

Timing Kit W/Pump –
WPK42299

Timing Belt –
250291
250317

Tensioner –
T43065
T43066

MAKE:

Audi
Volkswagen

MODEL:

A4
Passat

YEAR:

1997-2000

ENGINE:

1.8L

Refitting the synchronous drive with the reengineered component is the recommended service procedure for these vehicles.

NAPA Belts/Hoses Timing Component Kits and Water Pump offer the reengineered parts necessary to do the complete job, including the redesigned hydraulic strut tensioner (2523170 + WPK42299).

Please be aware that the updated drive system design requires a different timing belt. Those vehicles equipped with the old design will have a 152 tooth timing belt (250291). The updated design makes use of a 153 tooth belt (250317). This 153 tooth belt combined with the components contained in a NAPA Belts/Hoses timing component kit will set the drive in the current OE approved configuration.

The OE system that is no longer available from the manufacturer is illustrated in Fig #1. The updated system, contained in NAPA Belts/Hoses 2523170 and WPK42299, which includes the redesigned hydraulic actuator (NAPA Belts/Hoses T43066), tensioning roller (NAPA Belts/Hoses T43065) and 153 Tooth timing belt (NAPA Belts/Hoses 250317) is illustrated in FIG #2.

A 152 tooth belt (250291) CANNOT be combined with the updated components pictured below (Fig #2). And a 153 tooth belt (250317) cannot be placed on the older version of the drive set up without risking engine damage (Fig #1).



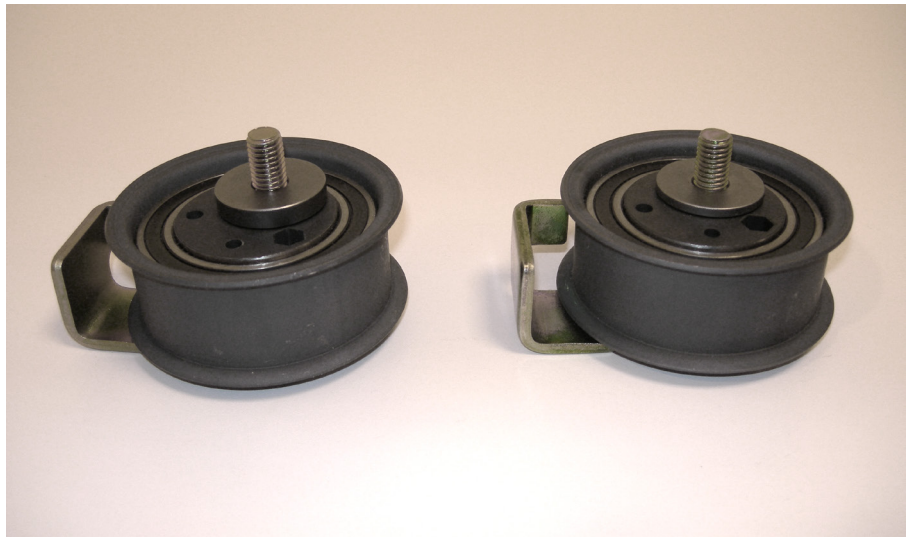
FIG #1 – OLD SYSTEM
152 Tooth Belt (250291)



FIG #2 – NEW SYSTEM
153 Tooth Belt (250317)

Please note if you are removing a system that has been updated, there could be a difference in the spacer that is included with the pulley. The one that is included in the 2523170 kit has a 6mm thick spacer; the other which is only available from the OE is 3mm thick. These are not interchangeable on the drive. Incorrect distance will cause premature belt and drive system failure.

Always double check the component you are removing. You may encounter a difference in spacer thickness of the tensioner pulley. If the spacer currently on the vehicle is 3mm, then it will need to be obtained from the OE. If the spacer is 6mm it will be supplied in the NAPA Belts/Hoses 2523170 or WPK42299. This will guarantee proper system alignment.



OE - 058109243E
NAPA Belts/Hoses - T43065
(included in NAPA Belts/Hoses - 2523170 Kit)

Note the size of spacer is 6mm

OE 058109243D
NAPA Belts/Hoses - N/A

Note size of spacer 3 mm