

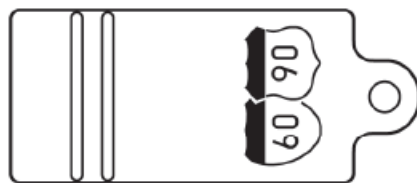


Belt Wear Inspection

How to Inspect Today's Belts

Today's serpentine belts wear out gradually, much like a tire, and don't always show signs of visual wear. A serpentine belt can appear to be in good condition when it's actually near failure. Belts manufactured before the year 2000 show obvious failure signs such as cracks. The New NAPA Belts/Hoses Belt Wear Gauge provides a simple and reliable way to determine if a serpentine belt has lost enough material to negatively affect performance and warrant replacement.

[See the reverse side for instructions >](#)





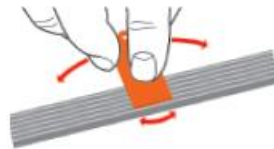
New Belt Wear Gauge New & Improved – Easier to Use!

The NAPA Belt/Hoses Belt Wear Gauge was designed with input from professional automotive technicians. It is easy to use and gives instant pass/fail results. You can use it on or off the vehicle, one-handed, and even in places where you can't see.

HOW TO USE THE NEW BELT WEAR GAUGE



With the engine off, press the gauge ribs into the belt grooves using gentle pressure to hold the gauge against the belt and seat the ribs.



Attempt to rock the gauge in a lateral motion.

GOOD BELT



When the gauge remains tightly seated and resists movement, the belt has sufficient service life left.



The gauge ribs will contact the sides of the belt material and the body may rest slightly above the belt surface.

WORN BELT



When the gauge allows lateral rocking motion, the belt is in need of replacement.



The gauge ribs will not contact the belt material and the gauge body will rest flat on the belt, allowing movement in the tool.

Check belts for inconsistent wear within grooves indicating pulley misalignment or a malfunction of other components of the drive system.